



## TERMS OF REFERENCE

### ECOSYSTEMS BASED ADAPTATION (EBA)

#### Develop Landscape Management Strategies and Investment Plans for eight landscapes across Namibia

#### 1. BACKGROUND

The Environmental Investment Fund of Namibia (EIF), in 2015, obtained accreditation by the Green Climate Fund (GCF). The GCF is a unique global fund, established within the rubric of the UN Framework Convention on Climate Change (UNFCCC), as a response to climate change for investing in low-emission and climate-resilient development. The status of accreditation makes EIF eligible for accessing climate change funding from the GCF.

As a result, the GCF Board at its 22<sup>nd</sup> Board meeting in February 2019 approved the first **EbA project proposal entitled “Building resilience of communities living in landscapes threatened under climate change through an ecosystem based adaptation approach in Namibia”**. The EbA project’s overall objective is to **increase climate change resilience of productive landscapes in Namibia through implementation of ecosystem based adaptation actions that strengthen social and ecological systems to sustain livelihoods at local levels and facilitate value chains of natural resources**. The project will be implemented in eight landscapes that are managed by registered Community Based Organisations (CBOs), gazetted Communal Conservancies, Community Forests, Water Point Committees, Farmers Associations etc.

This is a project of the Ministry of Environment, Forestry and Tourism (MEFT) which is implemented by the EIF through a Project Management Unit (PMU), and is spearheaded by a multi-stakeholder Project Steering Committee (PSC).

The project implementation is guided by the three (3) components below in eight landscapes :

#### ***Component 1: Development and Implementation of climate change resilient ecosystem management and product practices that reduce the vulnerability of communities***

This component aims to provide technical assistance and training:

- Creating institutional landscape governance systems and/or strengthening them through participatory knowledge sharing at local level.
- Enhancing institutional capacity for ecosystem landscape management and climate change resilience at sub-national & local levels.

#### ***Component 2: Increase the resilience of productive landscapes to support ecosystem goods and services that improves livelihoods for local communities in Namibia***

This component aims to establish and implement a ring fenced grant facility targeting the ecosystem based adaptation activities by providing grants funding through two (2) investment windows in accordance with the eligibility criteria and procedure described in the funding proposal (Addendum VII – Funding proposal package for SAP OO6) and GCF Investment and Results Management Frameworks:

- Ecosystem based Adaptation of 8 landscapes
- Climate-resilient infrastructure
- Natural Resource Enterprises

#### ***Component 3: Documentation, dissemination and uptake of lessons learned***

Establishing an integrated information system to effectively manage results in informed decision-making at all levels. The integrated information system will enable the;

- Developing of knowledge products, e.g. Photo-stories & Presentations.
- Conducting annual policy advocacy activities & local forums.
- Developing a national EbA strategy in consultation with the NDC & NAP teams under the guidance of the NDA.
- Producing a policy based assessment report.

## 2. THE OBJECTIVE OF THE ASSIGNMENT

The EbA Project is seeking the services of consortiums/consulting firms/NGOs/CBO's to support

**Component 1 – Activity 1.1.1** and undertake community facilitation to attain the

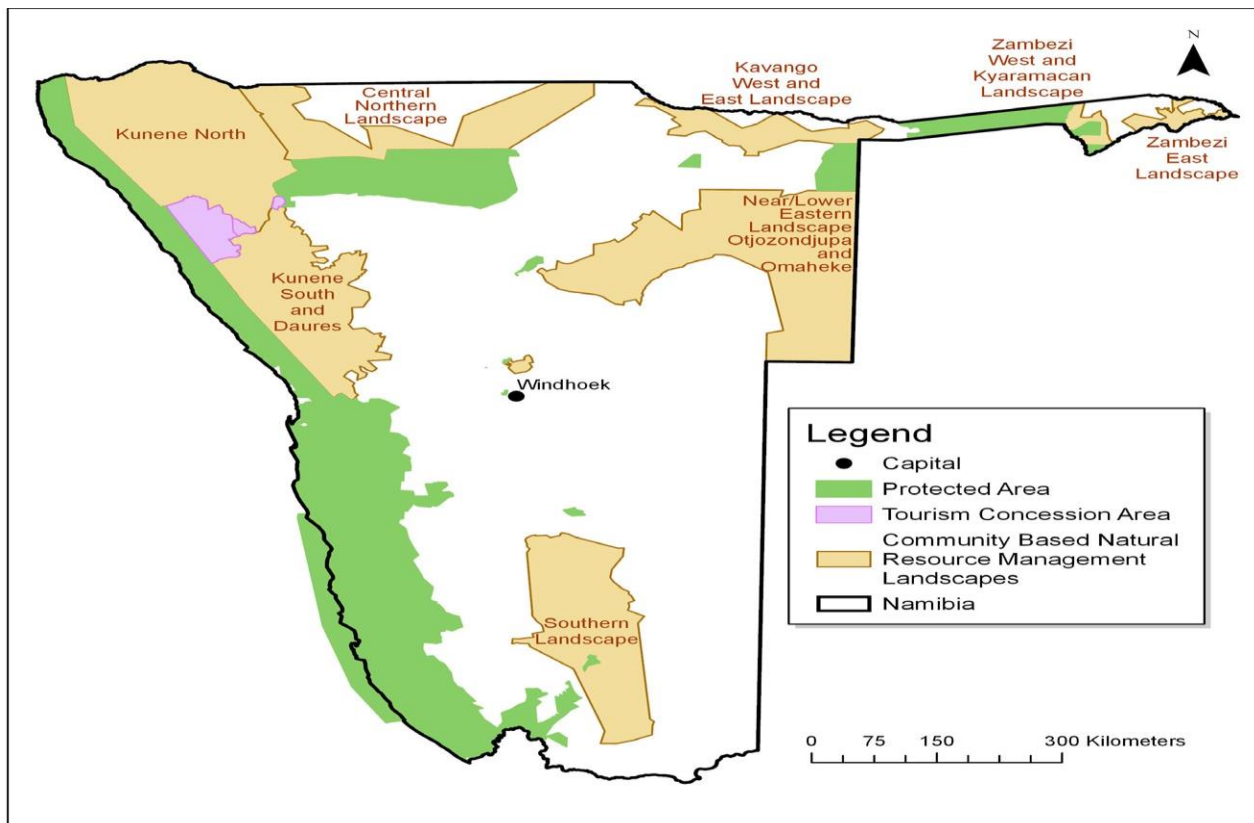
- Development of **Landscape Management Strategies** and **Investment Plans** for the eight focal landscapes covering 225,689 km<sup>2</sup> hectares.

This will be done through designing concepts which supports landscape-level work that will enable a demonstration of the impacts of EbA concepts for rural development and wealth creation through sustainable landscape management concepts which promote:

- Restoration and climate proofing projects which contributes to land management interventions that will ensure restoration of forest and savannas
- Eco enterprise adaptation investments initiatives that contributes towards the objective of sustainable rural development and poverty alleviation which secure/maintain rural economy.

## 3. PROJECT FOCAL LANDSCAPES/LOCATION

These are Central Northern Landscape, Lower Eastern Landscape, Kavango West and East Landscape, Kunene North Landscape, Kunene South and Dâures Landscape, Southern Landscape, Zambezi East Landscape and Zambezi West and Kyaramacan Landscape. These landscapes encompass most of Namibia's conservancies and community forests and are home to majority of natural resources-reliant communities covering one fifth of Namibia's land surface and accommodating more than 200,000 people.



## Clustering

The EbA project is implemented in 13 political regions of Namibia, clustered in eight landscapes and two villages. The EbA PMU reclustered the landscapes only for this exercise into two clusters to ease the load of service providers.	
Activity 1.1.1 Development of Landscape Management Strategies and Investment Plans for the eight landscapes covering 225,689 km <sup>2</sup> hectares of land development of project results in the eight focal landscapes and two villages	
<b>Cluster 1</b>	<ul style="list-style-type: none"> <li>• Kunene South and Daures Landscape</li> <li>• Kunene North Landscape</li> <li>• Otjimbingwe</li> </ul>
	<ul style="list-style-type: none"> <li>• Southern Landscape</li> <li>• Lower Easter Landscape</li> <li>• Ovitoto</li> </ul>
<b>Cluster 2</b>	<ul style="list-style-type: none"> <li>• Zambesi West Landscape</li> <li>• Zambesi East Landscape</li> </ul>
	<ul style="list-style-type: none"> <li>• North Central Landscape</li> <li>• Kavango East &amp; West</li> </ul>
<b>Focal strategies and actions for dryland, mountainous and wetland landscapes</b>	<ul style="list-style-type: none"> <li>• Restoration and climate proofing projects</li> <li>• Eco enterprise adaptation projects</li> </ul>

### 4. THE SCOPE OF SERVICE

The scope of this assignment is to study the situations in the respective landscapes & two villages , conduct discussions with key stakeholder and identify investment opportunities and management strategies which support developmental interventions related to:

- a) restoration and climate proofing and
- b) eco-enterprises adaptation

for possible financing under the SAP006 project. Such investment opportunities are to be packaged in the form of landscape investment plans with detail management strategies.

<b>Activity</b>	<b>Deliverables</b>
Conduct a series of meetings in target landscapes to identify EbA related developmental , ecosystems restoration programs ,sustainable management of ecosystems strategies, revenue generation models,reviewing,updating and designing management plans for implementation.	Investment plans. Community engagement report Vulnerability report Management strategies Organogram & Stakeholder list Spatial investment maps Business plans / proposal
Engage all stakeholders in each focal landscape in an ongoing coordination structure for project activities and identify project beneficiaries including women, youth and marginalized groups.	
Identify innovative approaches and technologies to enhance community resilience to climate change through EbA projects.	
Undertake participatory land-use planning through coordination structures and agree on management guidelines for protection, sustainable use and ecosystem restoration concepts	
Undertake a financial and economic analysis on possible four EbA investments with greater return for target landscapes communities	
Develop spatially explicit management plans and protocols for each site where community activities will be undertaken.	
Assist communities with grant application to EIF for identified projects (at least four proposals per landscape)	

### 5. SPECIFIC TASK

The consultants will be expected to undertake following specific tasks:

- a) Undertake a Desk Review of all existing materials and documentation related to the project, focal target landscapes and conduct an extensive review of all reports and documents generated thus far under the SAP006.These will include, but not limited to, the Funding Proposal, Project

- Inception Report, the Stakeholders Engagement Strategy and Gender Action Plan and Environmental and Social Safeguards Report.
- b) Familiarize themselves with the FAA between GCF and EIF, as well as with the SA between EIF and MEFT, and all attachments/annexures referenced SAP006, especially the funding proposal and logical framework.
  - c) Convene an inception meeting with the EIF, MEFT and NACSO to agree on the sample concept designed by the consultant, tasks and the relevant logistical arrangements and timeframes.
  - d) Undertake stakeholder enumeration and facilitate consensus on practical landscape boundaries of each landscape.
  - e) Conduct extensive consultations with the relevant key stakeholders in each landscape on potential investment opportunities and management strategies. These will include, but not limited to, relevant community leadership, regional councils, GRN ministries, civil society organizations (CSOs) and community-based organizations (CBOs).
  - f) Identify innovative approaches and technologies with detail cost effective analysis for support through EbA project for investment funding .
  - g) Compile a comprehensive report inclusive of previous and current landscape investment plan and management strategies for each landscape.

In this effort, the successful service provider(s)/consultants are required to collaborate with NACSO Secretariat and Working Groups and NILALEG project – a GEF-funded project with a similar implementation strategy in which EIF manages the small grant facility and investments in similar eco-enterprises. The consultant(s) will work closely with the EbA PMU and NACSO Secretariat.

## 6. DELIVERABLES

The consultant is expected to deliver the following outputs:

- (i). Inception report or work plan within **5 days** of award: The consultant will submit an Inception Report to EIF within five days of the commencement of assignment on proposed methodology, work plan and structure of the report. This would be a guide of his/her understanding of the assignment and how to go about it.
- (ii). Draft report for EIF, MEFT (NDA) and PSC inputs (**within 6 weeks**): The consultant will present this draft evaluation report at a debriefing meeting.
- (iii). Final Report, representing a comprehensive landscape investment and management strategy report for each landscape - detailing the following (not limited to) - in the format and of quality acceptable to EIF:
  - Functional description of each landscape i.e. boundaries
  - A list of stakeholders in each landscape – with each stakeholder’s mandate/roles described.
  - An overview of current and previous investments by GRN and other development partners.
  - Assessment of challenges and opportunities.
  - A list of potential projects eligible for SAP006 funding packaged as investment opportunities with detail management strategies for each landscapes and villages.
  - Recommendations for possible funding

## 7. DURATION OF THE WORK AND MANAGEMENT ARRANGEMENTS

The detailed schedule of the evaluation and length of the assignment will be discussed with the successful consultant prior to the assignment. The estimated duration of the consultants’ assignment is up to **30 working days within 60 calendar days**.

	Output	Timeline	% of payment	Target date
1	Inception report on proposed methodology, work plan, and proposed structure of the report	Within 5 days of contracting	30%	
2	A draft preliminary report and presentation, to be presented at a debriefing meeting	Within 6 weeks of contracting.	40%	
3	Final Interim Independent Evaluation Report	Within 15 working days after receipt of comments on the draft report	30%	
TOTAL:			100%	

## 8. QUALIFICATION CRITERIA

- Registered as a consulting firm, non-governmental organization or community-based organization with the relevant authorities;
- Has at least design landscape management strategies and investment plans in the landscape being applied for in Namibia;
- Well established institution with management structure and protocols in place;
- At least five years' experience in the field of rural development and environmental projects or implementing a similar project;
- Understanding of Namibian CBNRM sector will be an advantage
- Relevant experience in Working with EIF, MEFT or GEF funded projects

## 9. SUBMISSION OF THE PROPOSAL

The closing date for submission of the proposal is 31 March 2021. The proposal must be hand-delivered to the following address:

Please submit your quotation in a sealed envelope to the following address:

Procurement Unit  
Environmental Investment Fund of Namibia  
8933 Heinitzburg Heights  
3<sup>rd</sup> Floor  
Email: [JMaharero@eif.org.na](mailto:JMaharero@eif.org.na)  
Telephone: 061 4317738

### SUBMISSION REQUIREMENTS

One enveloped proposal (with the detailed technical and financial proposal) must be submitted containing the following information:

- A technical proposal with a profile of the consortia, references, and Curricula vitae (CVs) of the experts designated for the project.
- The proposal must contain a schedule with the earliest possible date for commencing the work, dates for the completion of steps of the project, and alternatives for the dates where appropriate.
- Detailed financial proposals **including DSA and other travel-related rates**.

**QUALIFYING WOMEN AND YOUTH ORGANISATIONS ARE ENCOURAGED TO APPLY**